

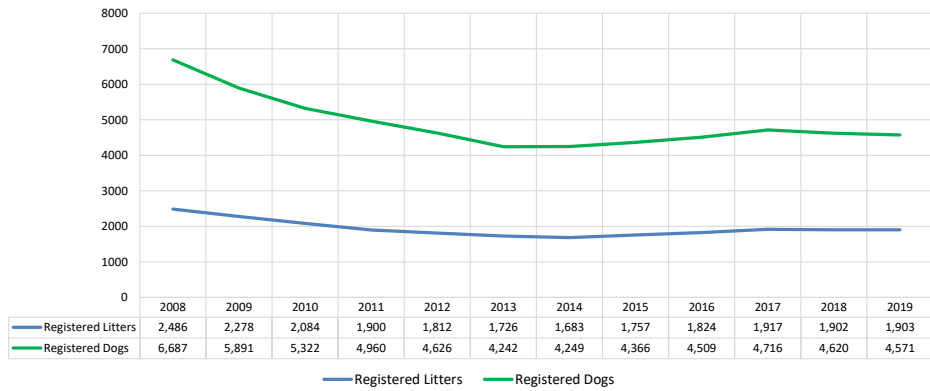
Spaniels (English Springer)													
Metric	2008	2009	2010	2011	2012	2013	2014	2015	2016	2017	2018	2019	Notes
Registered Litters	2,486	2,278	2,084	1,900	1,812	1,726	1,683	1,757	1,824	1,917	1,902	1,903	# AKC litters registered each year
Litter Complement	16,391	14,827	13,777	12,670	12,090	11,315	10,787	11,381	12,112	12,448	12,584	12,734	# Pups in each year's litters (known as the "Complement")
Average Complement	6.59	6.51	6.61	6.67	6.67	6.56	6.41	6.48	6.64	6.49	6.62	6.69	Average # of pups per litter
Individually Registered Pups (to date)	6,167	5,334	4,962	4,712	4,348	4,085	4,154	4,331	4,551	4,572	4,182	3,127	# Pups from each year's litters individually registered (to date)
Actual Return Rate (to date)	37.6%	36.0%	36.0%	37.2%	36.0%	36.1%	38.5%	38.1%	37.6%	36.7%	33.2%	24.6%	% Pups from each year's litters individually registered (to date)
Limited Registrations (to date)	801	826	824	900	917	944	1,023	1,115	1,264	1,338	1,282	1,111	# Limited Registrations from each year's litters (to date)
% Complement Registered Limited (to date)	4.9%	5.6%	6.0%	7.1%	7.6%	8.3%	9.5%	9.8%	10.4%	10.7%	10.2%	8.7%	% Pups from each year's litters Registered as Limited (to date)
Revoked Limited (to date)	9	17	7	18	15	20	22	20	19	16	4	4	# Revoked Limited Dogs from each year's litters (to date)
Litters from Revoked Limited (to date)	9	17	7	14	14	19	22	19	17	16	4	4	Litters involving each year's Revoked Limited (to date)
Complement Bitches Bred	726	686	634	533	602	580	552	549	501	390	167	8	Bitches from each year's litters that have been bred (to date)
Complement Dogs Bred	462	422	381	329	283	271	313	292	250	219	141	19	Males from each year's litters that have been bred (to date)
Total Complement Bred (to date)	1,188	1,108	1,015	862	885	851	865	841	751	609	308	27	Total from each year's litters that have been bred (to date)
% Complement Bred (to date)	7.2%	7.5%	7.4%	6.8%	7.3%	7.5%	8.0%	7.4%	6.2%	4.9%	2.4%	0.2%	% of each year's litters that have been bred (to date)
Complement Bitches in Conformation	207	202	175	158	169	159	165	168	128	140	133	69	# Bitches from each year's litters in Conformation (to date)
Complement Dogs in Conformation	182	154	156	152	149	127	131	121	107	111	81	60	# Males from each year's litters in Conformation (to date)
Total Complement in Conformation (to date)	389	356	331	310	318	286	296	289	235	251	214	129	Total from each year's litters in Conformation (to date)
% Complement in Conformation (to date)	2.4%	2.4%	2.4%	2.4%	2.6%	2.5%	2.7%	2.5%	1.9%	2.0%	1.7%	1.0%	% of each year's litters in Conformation (to date)
Total Complement in Companion (to date)	128	134	119	109	99	86	85	85	58	59	18	-	Total from each year's litters in Companion (to date)
% Complement in Companion (to date)	0.78%	0.90%	0.86%	0.86%	0.82%	0.76%	0.79%	0.75%	0.48%	0.47%	0.14%	0.00%	% of each year's litters in Companion (to date)
Total Complement Placing in Performance (to date)	203	194	253	191	192	219	217	215	188	188	104	4	Total from each year's litters placing in Performance (to date)
% Complement Placing in Performance (to date)	1.2%	1.3%	1.8%	1.5%	1.6%	1.9%	2.0%	1.9%	1.6%	1.5%	0.8%	0.0%	% of each year's litters placing in Performance (to date)

AKC Dog Registrations	6,604	5,821	5,252	4,907	4,564	4,186	4,192	4,307	4,458	4,648	4,570	4,521	# Registered from AKC Litters during each year
FSS Registrations	-	-	-	-	-	-	-	-	-	-	-	-	# of FSS Dog Registrations each year
Conditional Registrations	5	14	5	12	8	6	5	13	9	19	11	3	# of Conditional Registrations each year
Open Registrations	1	2	1	-	1	-	-	-	-	1	-	-	# of Open Registrations each year
Foreign Registrations	77	54	64	41	53	50	52	46	42	48	39	47	# of Foreign-born Registrations each year
Total Dogs Registered	6,687	5,891	5,322	4,960	4,626	4,242	4,249	4,366	4,509	4,716	4,620	4,571	Total Dog Registrations each year
Unique Bitches Bred (each year)	2,212	2,017	1,861	1,667	1,608	1,497	1,466	1,542	1,562	1,651	1,633	1,633	Unique # bitches bred each year
Unique Dogs Bred (each year)	1,628	1,495	1,318	1,216	1,170	1,030	976	1,006	983	1,056	1,052	1,058	Unique # males bred each year
Total Bred (each year)	3,840	3,512	3,179	2,883	2,778	2,527	2,442	2,548	2,545	2,707	2,685	2,691	Unique # bred each year
Unique Bitches in Conformation (each year)	635	584	557	558	519	517	477	477	463	435	436	437	Unique # of bitches in Conformation each year
Unique Dogs in Conformation (each year)	486	475	492	461	468	450	411	399	379	369	356	336	Unique # of males in Conformation each year
Total Unique in Conformation (each year)	1,121	1,059	1,049	1,019	987	967	888	876	842	804	792	773	Unique # in Conformation each year
% Change Conformation		-5.5%	-0.9%	-2.9%	-3.1%	-2.0%	-8.2%	-1.4%	-3.9%	-4.5%	-1.5%	-2.4%	YOY % Change Conformation total dogs
Unique Bitches in Companion (each year)	309	286	303	317	309	297	313	276	277	273	249	231	Unique # of bitches in Companion each year
Unique Dogs in Companion (each year)	239	222	234	237	234	235	239	234	230	194	191	178	Unique # of males in Companion each year
Total Unique in Companion (each year)	548	508	537	554	543	532	552	510	507	467	440	409	Unique # in Companion each year
% Change Companion		-7.3%	5.7%	3.2%	-2.0%	-2.0%	3.8%	-7.6%	-0.6%	-7.9%	-5.8%	-7.0%	YOY % Change Companion total dogs
Unique Bitches Placing in Performance (each year)	309	323	309	323	320	312	315	309	323	351	387	368	Unique # of bitches placing in Performance each year
Unique Dogs Placing in Performance (each year)	368	390	395	393	370	413	392	412	400	448	437	443	Unique # of males placing in Performance each year
Total Unique Placing in Performance (each year)	677	713	704	716	690	725	707	721	723	799	824	811	Unique # placing in Performance each year
% Change Performance		5.3%	-1.3%	1.7%	-3.6%	5.1%	-2.5%	2.0%	0.3%	10.5%	3.1%	-1.6%	YOY % Change Performance total dogs placing

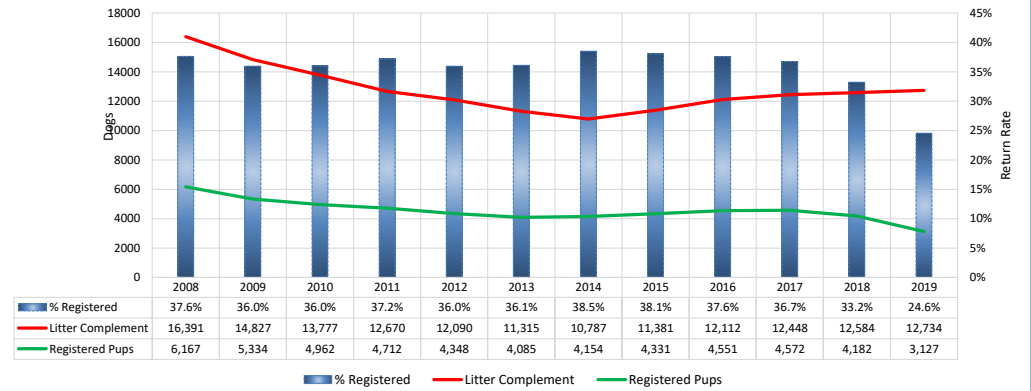
% Change YOY	2008	2009	2010	2011	2012	2013	2014	2015	2016	2017	2018	2019	
Registered Litters	N/A	-8.4%	-8.5%	-8.8%	-4.6%	-4.7%	-2.5%	4.4%	3.8%	5.1%	-0.8%	0.1%	These %'s are calculated to show the change each year from the previous year.
Litter Complement	N/A	-9.5%	-7.1%	-8.0%	-4.6%	-6.4%	-4.7%	5.5%	6.4%	2.8%	1.1%	1.2%	
Registered Dogs	N/A	-11.9%	-9.7%	-6.8%	-6.7%	-8.3%	0.0%	2.8%	3.3%	4.6%	-2.0%	-1.1%	
% Change Relative 2008	2008	2009	2010	2011	2012	2013	2014	2015	2016	2017	2018	2019	
Registered Litters	0.0%	-8.4%	-16.2%	-23.6%	-27.1%	-30.6%	-32.3%	-29.3%	-26.6%	-22.9%	-23.5%	-23.5%	These %'s are calculated to show the change each year compared to 2008.
Litter Complement	0.0%	-9.5%	-15.9%	-22.7%	-26.2%	-31.0%	-34.2%	-30.6%	-26.1%	-24.1%	-23.2%	-22.3%	
Registered Dogs	0.0%	-11.9%	-20.4%	-25.8%	-30.8%	-36.6%	-36.5%	-34.7%	-32.6%	-29.5%	-30.9%	-31.6%	

Spaniels (English Springer)

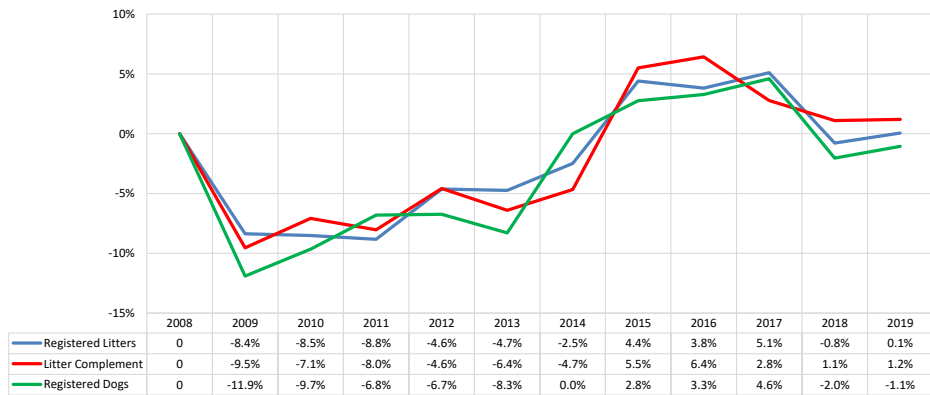
AKC Dog & Litter Registrations



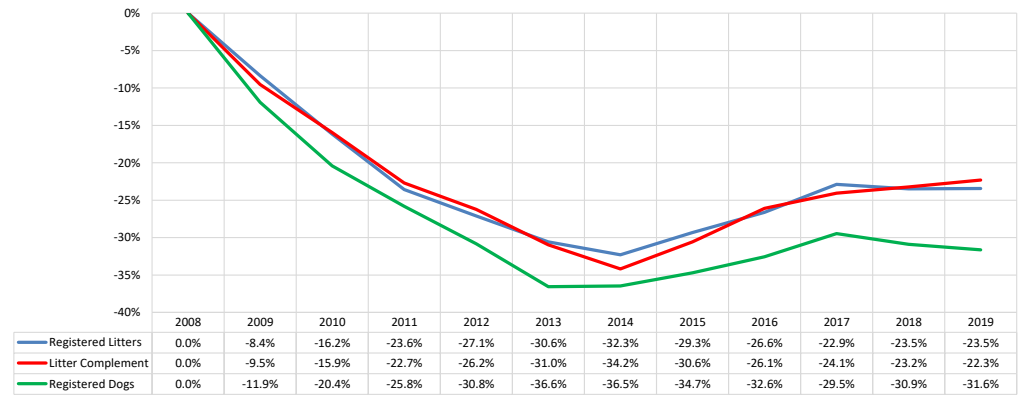
% of Each Year's Litter Complement that were Eventually Registered



% Change from Previous Year (YOY)

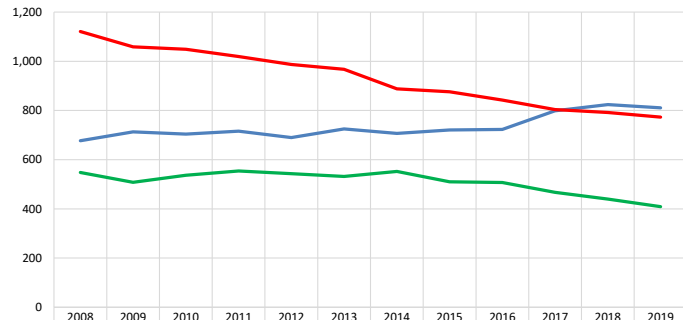


% Change Relative to 2008



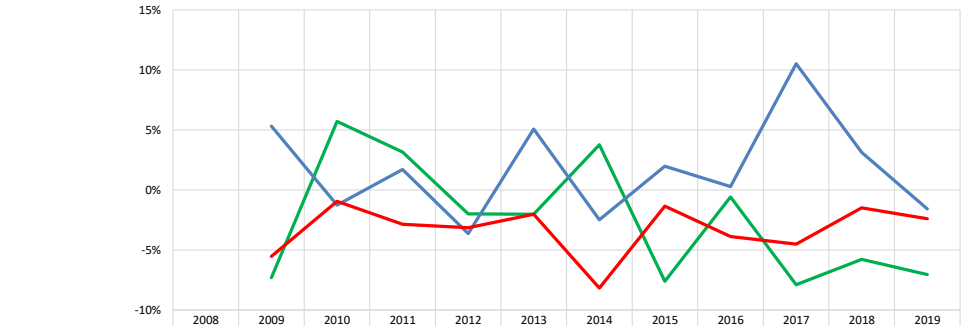
Spaniels (English Springer)

Competing: Total Unique Dogs by Sport Each Year



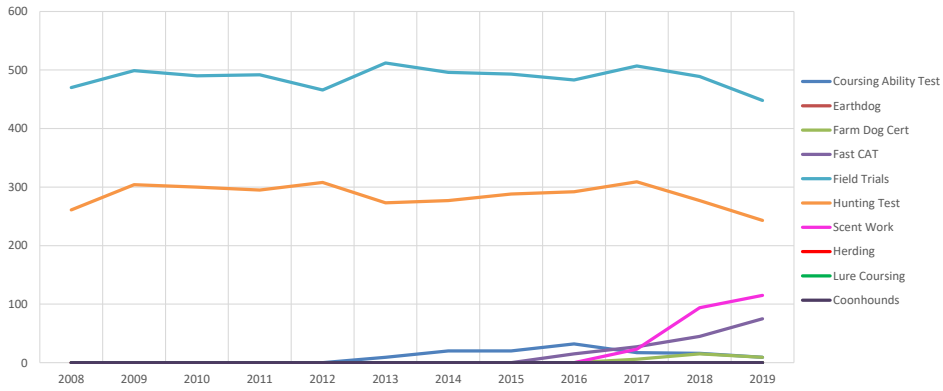
Total Unique in Companion (each year)	548	508	537	554	543	532	552	510	507	467	440	409
Total Unique Placing in Performance (each year)	677	713	704	716	690	725	707	721	723	799	824	811
Total in Conformation (each year)	1,121	1,059	1,049	1,019	987	967	888	876	842	804	792	773

Competing: % Change Unique Total Dogs Year over Year by Sport

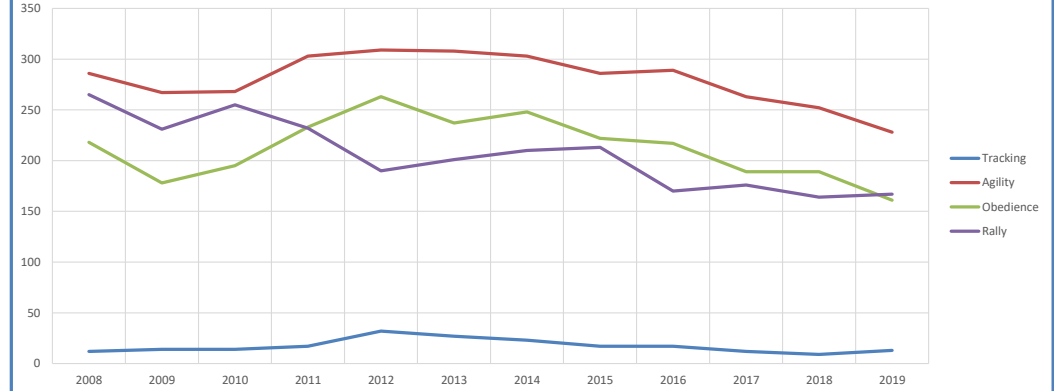


% Change Companion	-	-7.3%	5.7%	3.2%	-2.0%	-2.0%	3.8%	-7.6%	-0.6%	-7.9%	-5.8%	-7.0%
% Change Performance	-	5.3%	-1.3%	1.7%	-3.6%	5.1%	-2.5%	2.0%	0.3%	10.5%	3.1%	-1.6%
% Change Conformation	-	-5.5%	-0.9%	-2.9%	-3.1%	-2.0%	-8.2%	-1.4%	-3.9%	-4.5%	-1.5%	-2.4%

Performance: Total Unique Dogs Placing

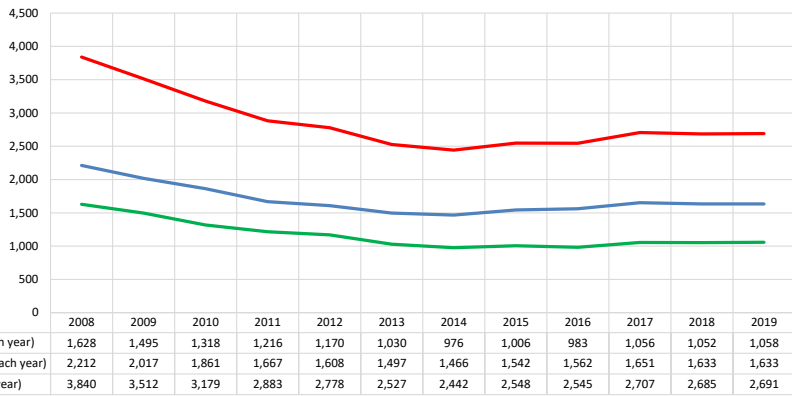


Companion: Total Unique Dogs Entered

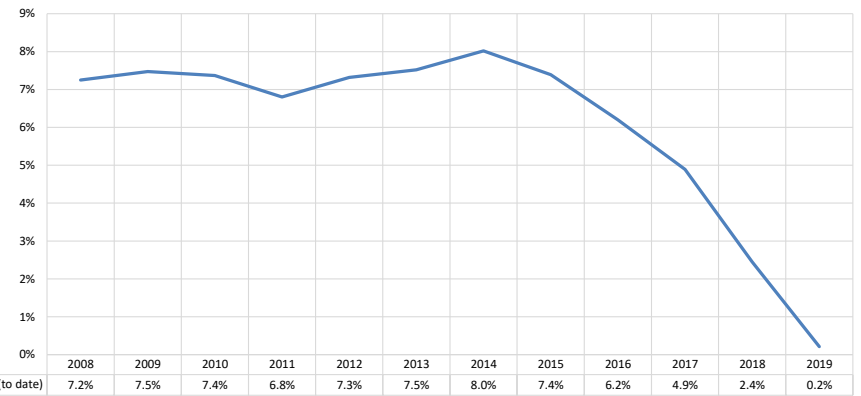


Spaniels (English Springer)

Breeding: Unique Individual Dogs & Bitches Bred Each Year



% of Each Year's Litter Complement that have been Bred (to date)



Competing: % of Each Year's Litter Complement in Competition

