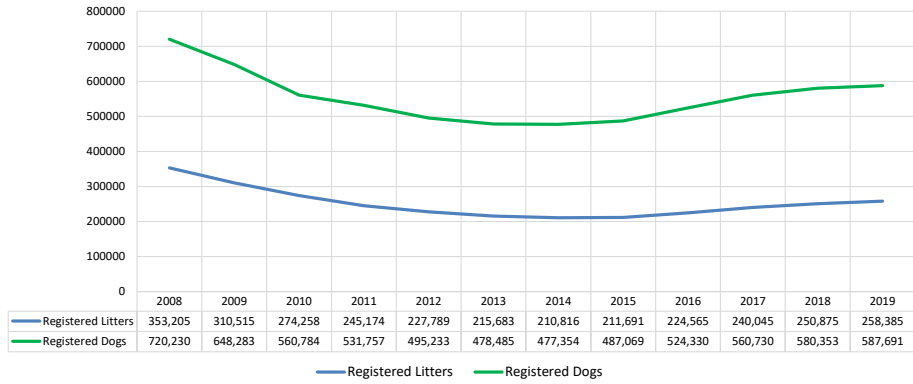


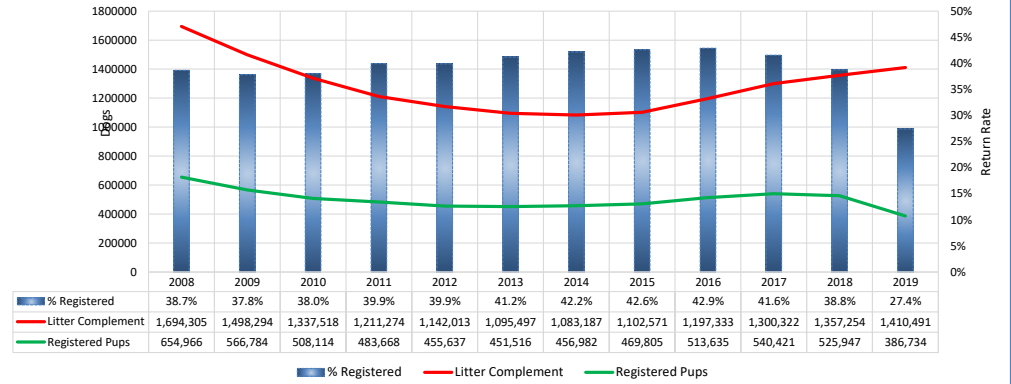
All Breeds (AKC only)														
Metric	2008	2009	2010	2011	2012	2013	2014	2015	2016	2017	2018	2019	Notes	
Litter #s & Litter Related Stats														
Registered Litters	353,205	310,515	274,258	245,174	227,789	215,683	210,816	211,691	224,565	240,045	250,875	258,385	# AKC litters registered each year	
Litter Complement	1,694,305	1,498,294	1,337,518	1,211,274	1,142,013	1,095,497	1,083,187	1,102,571	1,197,333	1,300,322	1,357,254	1,410,491	# Pups in each year's litters (known as the "Complement")	
Average Complement	4.80	4.83	4.88	4.94	5.01	5.08	5.14	5.21	5.33	5.42	5.41	5.46	Average # of pups per litter	
Individually Registered Pups (to date)	654,966	566,784	508,114	483,668	455,637	451,516	456,982	469,805	513,635	540,421	525,947	386,734	# Pups from each year's litters individually registered (to date)	
Actual Return Rate (to date)	38.7%	37.8%	38.0%	39.9%	39.9%	41.2%	42.2%	42.6%	42.9%	41.6%	38.8%	27.4%	% Pups from each year's litters individually registered (to date)	
Limited Registrations (to date)	76,699	73,724	69,876	73,273	75,301	78,981	84,791	95,384	110,631	123,016	128,543	113,755	# Limited Registrations from each year's litters (to date)	
% Complement Registered Limited (to date)	4.5%	4.9%	5.2%	6.0%	6.6%	7.2%	7.8%	8.7%	9.2%	9.5%	9.5%	8.1%	% Pups from each year's litters Registered as Limited (to date)	
Revoked Limited (to date)	1,499	1,561	1,316	1,456	1,472	1,635	1,781	2,074	2,061	1,772	1,185	375	# Revoked Limited Dogs from each year's litters (to date)	
Litters from Revoked Limited (to date)	1,403	1,422	1,225	1,321	1,363	1,528	1,661	1,923	1,934	1,688	1,143	365	Litters involving each year's Revoked Limited (to date)	
Complement Bitches Bred	94,781	82,796	76,249	71,580	71,952	72,469	73,682	73,997	74,489	61,233	27,762	1,700	Bitches from each year's litters that have been bred (to date)	
Complement Dogs Bred	55,431	47,431	42,629	39,298	37,963	37,037	36,496	35,913	36,517	31,995	18,950	1,572	Males from each year's litters that have been bred (to date)	
Total Complement Bred (to date)	150,212	130,227	118,878	110,878	109,915	109,506	110,178	109,910	111,006	93,228	46,712	3,272	Total from each year's litters that have been bred (to date)	
% Complement Bred (to date)	8.9%	8.7%	8.9%	9.2%	9.6%	10.0%	10.2%	10.0%	9.3%	7.2%	3.4%	0.2%	% of each year's litters that have been bred (to date)	
Complement Bitches in Conformation	26,496	24,818	23,939	23,129	22,444	21,580	21,014	20,411	20,176	19,999	18,728	9,114	# Bitches from each year's litters in Conformation (to date)	
Complement Dogs in Conformation	21,127	19,520	19,015	18,377	17,843	16,574	16,157	15,317	15,390	14,768	13,791	6,949	# Males from each year's litters in Conformation (to date)	
Total Complement in Conformation (to date)	47,623	44,338	42,954	41,506	40,287	38,154	37,171	35,728	35,566	34,767	32,519	16,063	Total from each year's litters in Conformation (to date)	
% Complement in Conformation (to date)	2.8%	3.0%	3.2%	3.4%	3.5%	3.5%	3.4%	3.2%	3.0%	2.7%	2.4%	1.1%	% of each year's litters in Conformation (to date)	
Total Complement in Companion (to date)	9,623	8,997	8,969	8,819	8,319	8,054	7,909	7,300	6,787	5,515	2,949	483	Total from each year's litters in Companion (to date)	
% Complement in Companion (to date)	0.57%	0.60%	0.67%	0.73%	0.73%	0.74%	0.73%	0.66%	0.57%	0.42%	0.22%	0.03%	% of each year's litters in Companion (to date)	
Total Complement Placing in Performance (to date)	11,231	10,898	10,919	11,344	11,350	11,209	11,693	11,490	11,732	10,686	6,875	1,012	Total from each year's litters placing in Performance (to date)	
% Complement Placing in Performance (to date)	0.7%	0.7%	0.8%	0.9%	1.0%	1.0%	1.1%	1.0%	1.0%	0.8%	0.5%	0.1%	% of each year's litters placing in Performance (to date)	
Dog #s & Dog Related Stats														
AKC Dog Registrations	699,431	632,390	546,351	517,371	480,601	465,555	463,464	473,064	510,505	545,990	564,300	571,315	# Registered from AKC Litters during each year	
FSS Registrations	8,779	5,338	4,142	4,507	4,012	2,660	3,045	1,685	444	373	247	218	# of FSS Dog Registrations each year	
Conditional Registrations	3,077	2,579	2,196	2,069	1,987	1,935	2,236	2,262	2,526	2,793	2,721	2,504	# of Conditional Registrations each year	
Open Registrations	1,249	948	1,327	1,308	1,622	1,602	1,528	2,284	1,801	1,579	1,598	1,539	# of Open Registrations each year	
Foreign Registrations	7,694	7,028	6,768	6,502	7,011	6,733	7,081	7,774	9,054	9,995	11,487	12,115	# of Foreign-born Registrations each year	
Total Dogs Registered	720,230	648,283	560,784	531,757	495,233	478,485	477,354	487,069	524,330	560,730	580,353	587,691	Total Dog Registrations each year	
Unique Bitches Bred (each year)	306,068	278,603	246,968	220,110	202,798	191,161	185,560	185,780	195,244	206,522	215,341	221,786	Unique # bitches bred each year	
Unique Dogs Bred (each year)	201,004	183,942	162,953	144,966	131,215	122,925	118,072	116,390	119,492	124,325	128,931	132,446	Unique # males bred each year	
Total Bred (each year)	507,072	462,545	409,921	365,076	334,013	314,086	303,632	302,170	314,736	330,847	344,272	354,232	Unique # bred each year	
Unique Bitches in Conformation (each year)	72,182	69,203	66,357	64,601	62,759	60,874	58,644	57,162	55,932	54,810	54,344	53,416	Unique # of bitches in Conformation each year	
Unique Dogs in Conformation (each year)	60,472	57,628	55,052	53,894	52,878	50,727	48,558	46,813	45,273	44,062	43,297	42,597	Unique # of males in Conformation each year	
Total Unique in Conformation (each year)	132,654	126,831	121,409	118,495	115,637	111,601	107,202	103,975	101,205	98,872	97,641	96,013	Unique # in Conformation each year	
% Change Conformation		-4.4%	-4.3%	-2.4%	-2.4%	-3.5%	-3.9%	-3.0%	-2.7%	-2.3%	-1.2%	-1.7%	YOY % Change Conformation total dogs	
Unique Bitches in Companion (each year)	20,159	19,968	19,803	20,408	20,636	20,351	19,978	19,694	19,556	19,026	18,941	18,833	Unique # of bitches in Companion each year	
Unique Dogs in Companion (each year)	18,402	18,250	18,368	18,773	19,002	18,854	18,743	18,263	18,071	17,466	17,233	17,282	Unique # of males in Companion each year	
Total Unique in Companion (each year)	38,561	38,218	38,171	39,181	39,638	39,205	38,721	37,957	37,627	36,492	36,174	36,115	Unique # in Companion each year	
% Change Companion		-0.9%	-0.1%	2.6%	1.2%	-1.1%	-1.2%	-2.0%	-0.9%	-3.0%	-0.9%	-0.2%	YOY % Change Companion total dogs	
Unique Bitches Placing in Performance (each year)	13,187	13,351	12,689	12,627	12,646	13,190	13,577	13,269	14,227	15,814	18,320	20,199	Unique # of bitches placing in Performance each year	
Unique Dogs Placing in Performance (each year)	13,329	13,525	12,883	12,645	12,480	12,844	13,215	13,002	13,561	14,984	17,296	18,596	Unique # of males placing in Performance each year	
Total Unique Placing in Performance (each year)	26,516	26,876	25,572	25,272	25,126	26,034	26,792	26,271	27,788	30,798	35,616	38,795	Unique # placing in Performance each year	
% Change Performance		1.4%	-4.9%	-1.2%	-0.6%	3.6%	2.9%	-1.9%	5.8%	10.8%	15.6%	8.9%	YOY % Change Performance total dogs placing	
% Change YOY	2008	2009	2010	2011	2012	2013	2014	2015	2016	2017	2018	2019		
Registered Litters	N/A	-12.1%	-11.7%	-10.6%	-7.1%	-5.3%	-2.3%	0.4%	6.1%	6.9%	4.5%	3.0%	These %s are calculated to show the change each year from the previous year.	
Litter Complement	N/A	-11.6%	-10.7%	-9.4%	-5.7%	-4.1%	-1.1%	1.8%	8.6%	8.6%	4.4%	3.9%		
Registered Dogs	N/A	-10.0%	-13.5%	-5.2%	-6.9%	-3.4%	0.0%	2.0%	7.7%	6.9%	3.5%	1.3%		
% Change Relative 2008	2008	2009	2010	2011	2012	2013	2014	2015	2016	2017	2018	2019		
Registered Litters	0.0%	-12.1%	-22.4%	-30.6%	-35.5%	-38.9%	-40.3%	-40.1%	-36.4%	-32.0%	-29.0%	-26.8%	These %s are calculated to show the change each year compared to 2008.	
Litter Complement	0.0%	-11.6%	-21.1%	-28.5%	-32.6%	-35.3%	-36.1%	-34.9%	-29.3%	-23.3%	-19.9%	-16.8%		
Registered Dogs	0.0%	-10.0%	-22.1%	-26.2%	-31.2%	-33.6%	-33.7%	-32.4%	-27.2%	-22.1%	-19.4%	-18.4%		

All Breeds (AKC only)

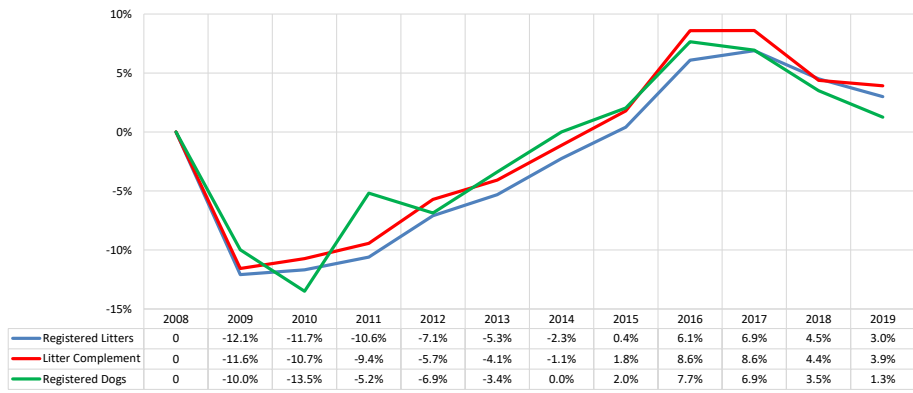
AKC Dog & Litter Registrations



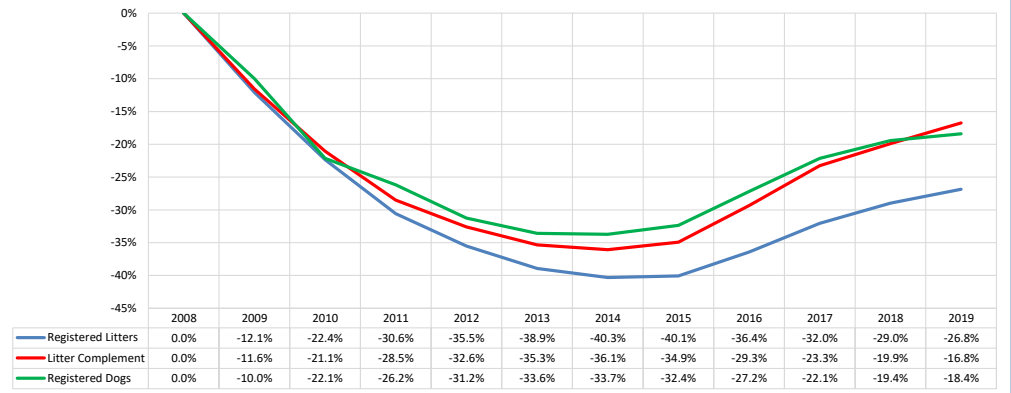
% of Each Year's Litter Complement that were Eventually Registered



% Change from Previous Year (YOY)

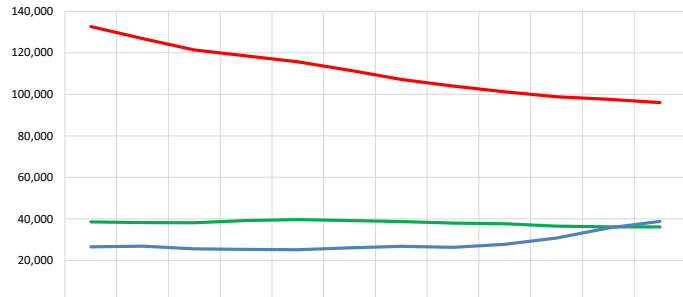


% Change Relative to 2008



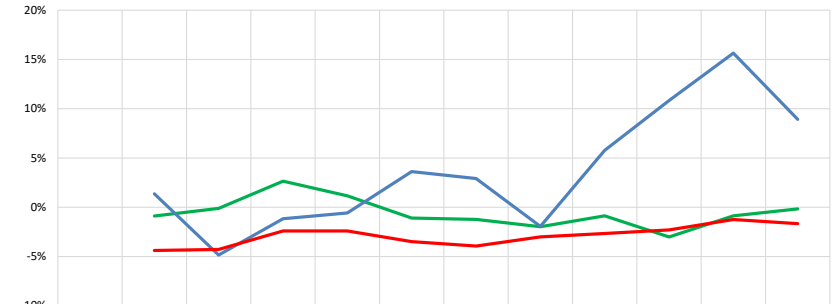
All Breeds (AKC only)

Competing: Total Unique Dogs by Sport Each Year



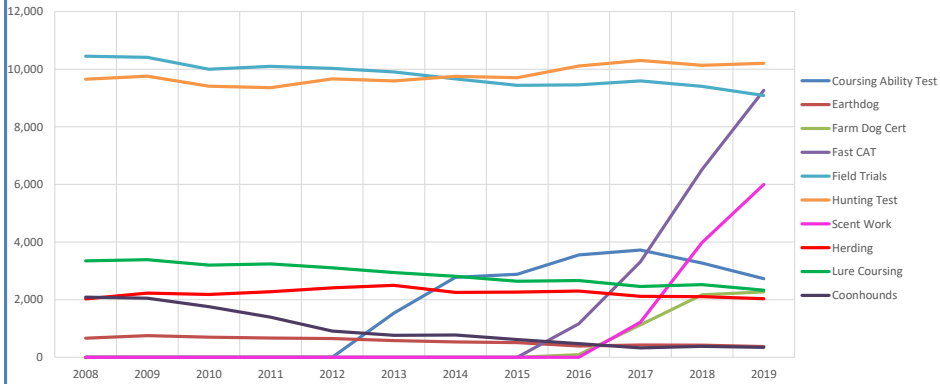
Year	Total Unique in Companion (each year)	Total Unique Placing in Performance (each year)	Total in Conformation (each year)
2008	38,561	26,516	132,654
2009	38,218	26,876	126,831
2010	38,171	25,572	121,409
2011	39,181	25,272	118,495
2012	39,638	25,126	115,637
2013	39,205	26,034	111,601
2014	38,721	26,792	107,202
2015	37,957	26,271	103,975
2016	37,627	27,788	101,205
2017	36,492	30,798	98,872
2018	36,174	35,616	97,641
2019	36,115	38,795	96,013

Competing: % Change Unique Total Dogs Year over Year by Sport

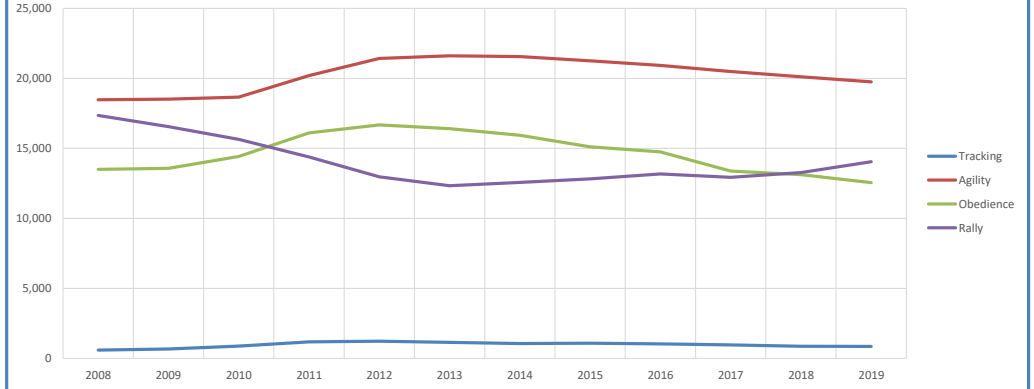


Year	% Change Companion	% Change Performance	% Change Conformation
2008	-	-	-
2009	-0.9%	1.4%	-4.4%
2010	-0.1%	-4.9%	-4.3%
2011	2.6%	-1.2%	-2.4%
2012	1.2%	-0.6%	-2.4%
2013	-1.1%	3.6%	-3.5%
2014	-1.2%	2.9%	-3.9%
2015	-2.0%	-1.9%	-3.0%
2016	-0.9%	5.8%	-2.7%
2017	-3.0%	10.8%	-2.3%
2018	-0.9%	15.6%	-1.2%
2019	-0.2%	8.9%	-1.7%

Performance: Total Unique Dogs Placing

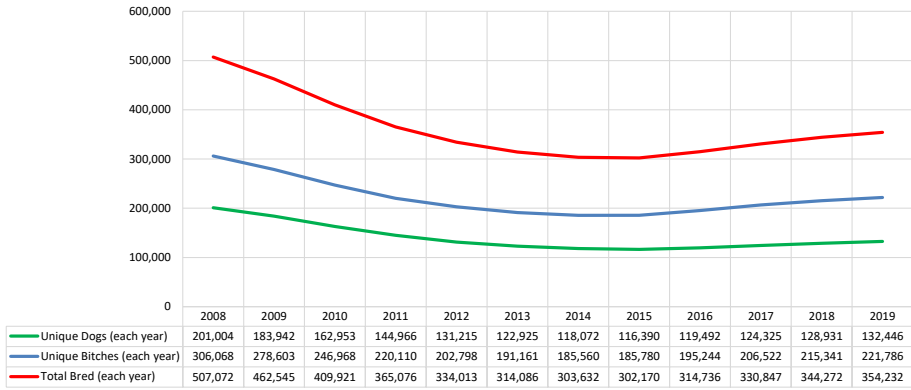


Companion: Total Unique Dogs Entered

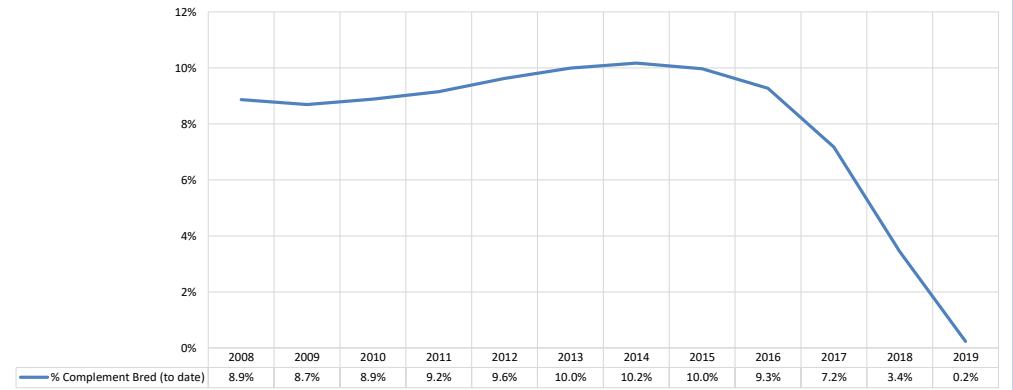


All Breeds (AKC only)

Breeding: Unique Individual Dogs & Bitches Bred Each Year



% of Each Year's Litter Complement that have been Bred (to date)



Competing: % of Each Year's Litter Complement in Competition

